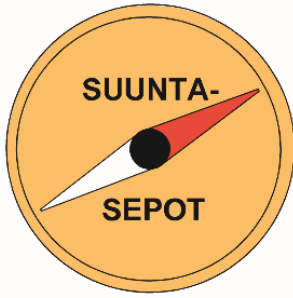


Bulletin 3



Orienteeringclub Suunta-Sepot from Sastamala organizes TrailO Finnish Championships and WRE 8.-9. August 2020 Sastamala, Finland

Organizers:

Event Director

Tatu Saari

Suunta-Sepot

Course Setter

Pekka Seppä

Suunta-Sepot

IOF Event Adviser

Petteri Hakala

Rasti-Nokia

Contacts: English speaking contact: Tatu Saari

[tatu.saari # gmail.com](mailto:tatu.saari@gmail.com)

+358503579998

Website: www.suunta-sepot.fi

Coronavirus:

Coronavirus situation in Finland is good at the moment. We hope that everyone traveling to the race is responsible and careful.

Classes: Open Elite (E)

All Elite class competitors must have **IOF license number (IOF ID)**. You will get IOF license number by creating user account in IOF Eventor. It doesn't cost anything, you only have to enter your information to the system. Finnish competitors must have a valid Finnish orienteering license

Event programme

8.8.2020 Saturday

Model from 9.00 to 12.30 at Kangastie 35, Sastamala. Guidance from the intersection of roads 252 and 2521. GPS Coordinates N = 61.304425 E = 22.933309.

It is 5 km from model orienteering to the competition center

PreO WRE The race starts at 13.00

The competition center is located on the shores of Lake Houhajärvi at the Levo hunting lodge at Kangastie 543, Sastamala. Guidance from road 2521, 5,4 km from the junction of roads 252 and 2521. GPS Coordinates N = 61.287720 E = 23.014954

9.8.2020 Sunday

The Tempo WRE qualifier starts at 10.00 am **NOTE: Changed time from the previous bulletin.** The competition center is the same as in Saturday's Preo race

The tempo final will begin 30 min after the results of the qualifiers are confirmed.

The Tempo Qualifier is a WRE competition

The Tempo Finnish Championship consists of a qualifier and a final, the results of which are added together. From the qualifiers, the top 15 Finnish competitors and as many foreign competitors as there will be among the fifteen Finns will advance to the finals.

Terrain: The terrain is an old forested gravel pit. Lots of small shapes. Good visibility. Pretty good paths.

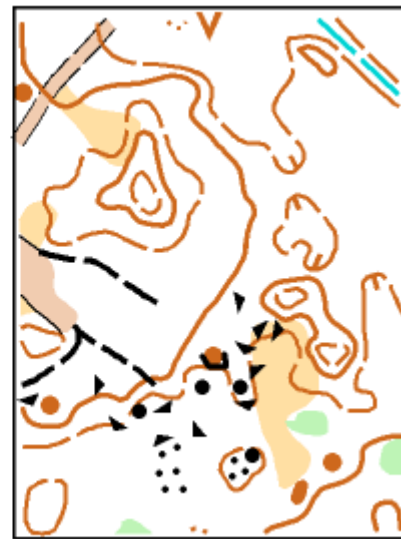


Maps: ISSprOM2019

1:4000 / 2,5 m

Mapper:

Petteri Hakala 2019



Escorts: You are allowed to compete with your own escort. Escort may help only with punching and moving on, not solving the tasks. Along the route, there are officials to help in the most difficult places when needed.

Competition Rules: The rules of Finnish Orienteering Federation and International Orienteering Federation will be applied in the competition. The rules of the Finnish Orienteering Federation are available on the website <https://www.suunnistusliitto.fi/kilpailu/saannot-ja-ohjeet/lajisaannot/> (only in Finnish)/ More detailed information will be given in event instructions

VISA: According to the current regulations, citizens of some countries must obtain a visa in order to enter Finland. Please check the following website for more information: <https://um.fi/entering-finland>

Request for visas should be submitted at your nearest Finnish Embassy. Please contact as soon as possible (tatu.saari # gmail.com) if you need invitation for visa application.

Entry Fees:

PreO	Saturday	8.8.2020	31,55 €
TempO	Sunday	9.8.2020	28,35 €

Entries:

Finnish competitors enter via IRMA, foreign competitors via Eventor.

Foreign competitors pay via bank transfer:

Recipient: Suunta-Sepot

IBAN: FI84 5660 2340 0109 62

BIC: OKOYFIHH

Address of Suunta-Sepot: Suunta-Sepot, Moskurintie 7, 38300 SASTAMALA

NOTE! As the message, please write: WRE SM: [name of the persons whose fee it is]

It is possible to entries for the WRE competition in Eventor on 5.8.2020.

Entries for the Finnish Championships no later than July 30, 2020

Please notice that you need to make entry separately to which each two competitions in Eventor or Irma.

Let us know, if you have a P-class status (there is only open class, but for possible extra time) P-status must be informed latest 2.8.2020 to email (tatu.saari # gmail.com)

Distances and races:

8.8. In the PreO competition: the distance from the competition center to the starting point is 650 m.

The length of the track is 1.4 km, 34 tasks (more details in the competition instructions)

The distance from the finish to the competition center is 800 m. People with reduced mobility can move to the starting point with their own cars. The finish line is transferred to the competition center via the starting point.

9.8. In the qualifier of the Tempo competition, the distance from the competition center to the starting point is 650 m.

The length of the track is 1.8 km, there are 6 stations and each station has 5 map tasks. The finish is in the starting position.

9.8. In the final of the Tempo competition, the distance from the competition center to the starting point is 1100 m.

The length of the track is 250 m, there are 4 stations and each station has 5 map tasks. The distance to the race center is 1.0 km from the finish.

Toilets

The competition center has a toilet, which is also wheelchair accessible. The nearest actual disabled toilet is at K-Citymarket at the intersection of Highway 12 and Road 252.

There will be a tent toilet in the middle of the route in Saturday's preo race.

Dining options:

The competition center has a café where you can buy coffee, tea, drinks, grilled sausages, etc.

The nearest restaurants are located at K-Citymarket at the Sastamala junction along Highway 12.

Cafe Kodin Sydän: Delicious soup lunch, a variety of salads and baked potato dishes. Not open on Sunday.

<https://www.facebook.com/Kahvila-KodinSyd%C3%A4n-154815365225362/>

Pizzeria Kotipizza: Pizza

<https://www.facebook.com/KotipizzaSastamala/>

In the center of Sastamala you can find e.g. Chinese restaurant, kebab and pizza places.

Gourmets should head

To Tyrvään Pappila <https://www.facebook.com/tyrvaanpappila/>

Accommodation:

<https://visitsastamala.fi>

Hotel Ellivuori: <https://www.ellivuoriesort.fi> sales@ellivuori.fi

Hotel Vammalan Seurahuone: <http://www.vammalanseurahuone.fi>

Hotel Pyynpesä: <https://www.pyynpesa.fi/>

Gasthaus Liekoranta: <http://www.liekoranta.fi>

Camping Tervakallio: <http://www.tervakallio.com>

B&B Komme Kurki: <https://www.kommeekurki.fi/>

If you need accessible for wheelchair accommodation, please check out accommodation offer in Tampere: <https://visittampere.fi/>

Travel: It is possible to travel by train to Sastamala from Helsinki-Vantaa Airport. See timetables at www.vr.fi

The name of Sastamala Train Station is Vammala. It is located 1.5 kilometers from the center of Sastamala. If you come by train, please contact us. We will try to arrange transportation to the competition site



The competition center is about 10 kilometers from the center of Sastamala .

Address Kangastie 543, Sastamala. N=61.287720 E=23.014954

The model is about 5 km from the center of Sastamala. The model is located on the way from Sastamala city center to the competition center. Address Kangastie 35, Sastamala. N=61.304425 E=22.933309.

Note: Road 2521 to the competition site is in very poor condition and is in need of repair. Drive carefully



Welcome

Suunta-Sepot